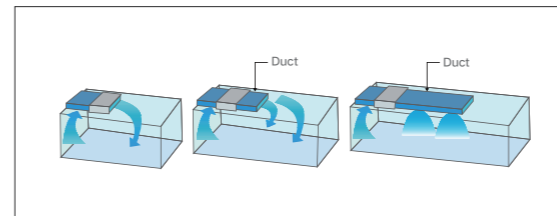




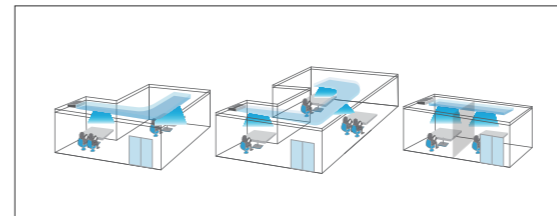
## High Static Pressure Duct Type Indoor Unit

High static pressure duct type unit, with large air volume, wide static pressure adjustment range and maximum static pressure, can be up to 250Pa; long air supply distance can be widely used in places where it is necessary to connect air pipes to achieve long-distance air supply, such as hotels, office buildings, shopping malls, factories.



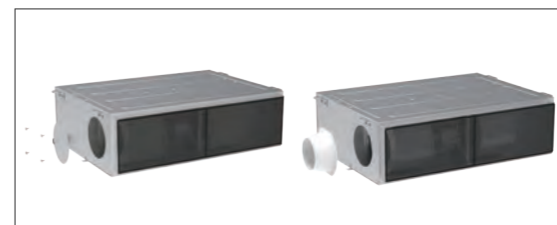
### ● High Static Pressure Design, Multi-stage Static Pressure to Adjust

There are 9-stage adjustable external static pressure. The highest static pressure can reach 200Pa. Engineering design and engineering application is more convenient and fast.



### ● Long-distance Air Supply

Support long-distance air supply to serve multiple air supply areas and satisfy complicated layout and locations, creating comfortable environment.



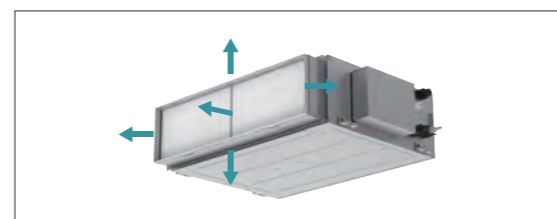
### ● Fresh Air Introduction Function

It can be connected to the fresh air duct to introduce fresh air from outside to ensure fresh indoor air.



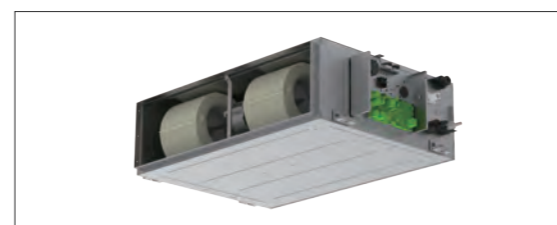
### ● High Efficiency Filtration

Optional high-efficiency filter device can effectively filtrate PM2.5, with small performance attenuation.



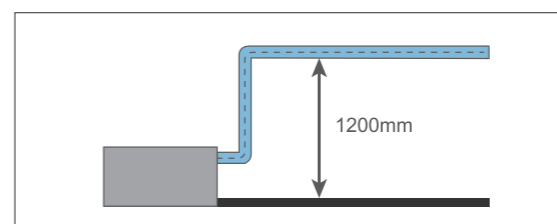
### ● Multi-directional Removable Filter

The filter can be disassembled from 5 directions (the arrow below shows the direction of the removable filter). Installation and maintenance are convenient and fast.



### ● Convenient Maintenance

External hanging electric box design for convenient maintenance.



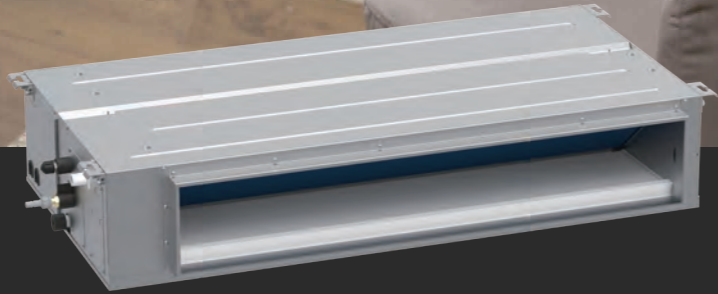
### ● Standard Fitting 1,200mm Condensate Water Lift Pump

The pump drainage height can be up to 1,200mm, and the vertical installation height of the unit can be flexibly adjusted, with high engineering adaptability.



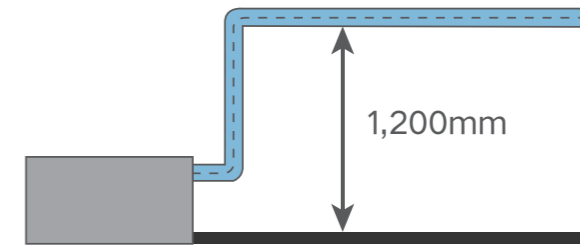
# Medium Static Pressure Duct Type Indoor Unit

Medium static pressure duct type indoor unit adopts DC motor, multi-stage air volume and static pressure adjustable design, free choices of air supply and return modes, flexible and convenient installation, meeting requirements for different locations such as hotels, office buildings, shopping malls, apartments, villas, families, etc.



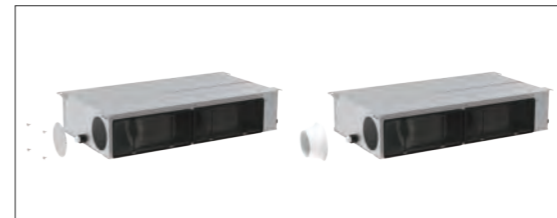
## ● Standard Fitting 1,200mm Condensate Water Lift Pump

Pump drainage height can be up to 1,200mm; vertical installation height of the unit can be flexibly adjusted, with high engineering adaptability.



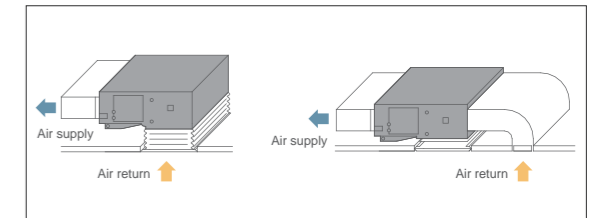
## ● Fresh Air Introduction Function

It can be connected to the fresh air duct to introduce fresh air from outside to ensure fresh indoor air.



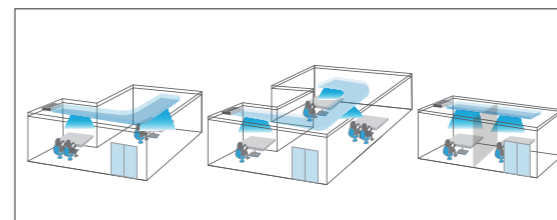
## ● Flexible Installation

According to the construction and use requirements, flexibly choose different return air ways and supply static pressure.



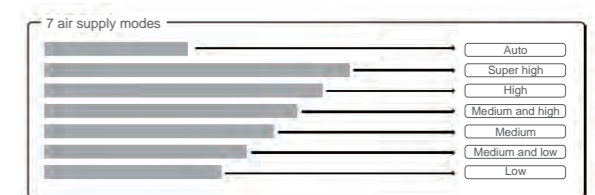
## ● 80Pa High Static Pressure Design, Multi-stage Static Pressure for Adjustment

The highest static pressure can be up to 80Pa, which is applicable to different installation locations to ensure cooling and heating effect. With wide static pressure range and 5 stages of adjustable external static pressure, the engineering design and application is more convenient and fast.



## ● 7-speed Air Volume Setting to Meet Diverse Needs

The DC motor can adjust up to 7 steps of air volume, accurately divide the air volume interval, reduce the noise value, and can set automatic quiet mode of indoor unit through wired controller, and enable the automatic quiet function according to the indoor temperature and personnel activities. Super high step and strong air volume, cooperating with outdoor compressor operation, it can enter strong cooling/heating mode; indoor unit motor can be adjusted to the highest step for rapid cooling/heating to reach the required temperature.



## ● DC Motor Design, Low Noise Operation

The brushless DC motor realizes stepless speed adjustment, and can set the automatic quiet mode through wired controller to make the operation quieter.

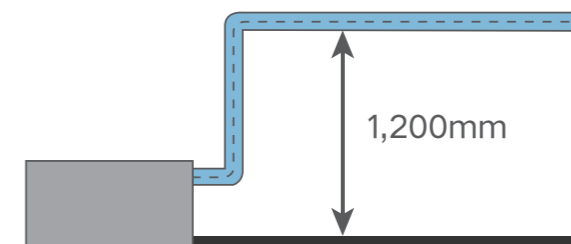


# Low Static Pressure Duct Type Indoor Unit

Low static pressure duct type indoor unit adopts DC motor, multi-stage air volume and static pressure adjustable design, free choices of air supply and return modes, flexible and convenient installation, meeting requirements for different locations such as hotels, office buildings, shopping malls, apartments, villas, families, etc.

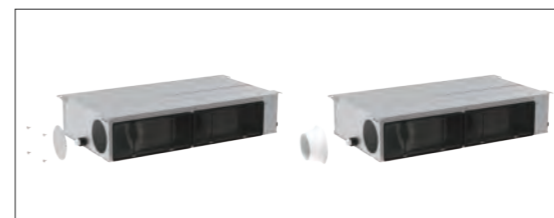
## ● Standard Fitting 1,200mm Condensate Water Lift Pump

Pump drainage height can be up to 1,200mm; vertical installation height of the unit can be flexibly adjusted, with high engineering adaptability.



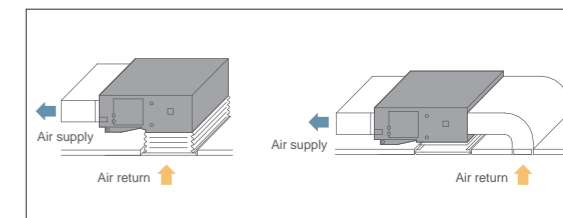
## ● Fresh Air Introduction Function

It can be connected to the fresh air duct to introduce fresh air from outside to ensure fresh indoor air.



## ● Flexible Installation

According to the construction and use requirements, flexibly choose different return air ways and supply static pressure.



## ● 7-speed Air Volume Setting to Meet Diverse Needs

The DC motor can adjust up to 7 steps of air volume, accurately divide the air volume interval, reduce the noise value, and can set automatic quiet mode of indoor unit through wired controller, and enable the automatic quiet function according to the indoor temperature and personnel activities. Super high step and strong air volume, cooperating with outdoor compressor operation, it can enter strong cooling/heating mode; indoor unit motor can be adjusted to the highest step for rapid cooling/heating to reach the required temperature.





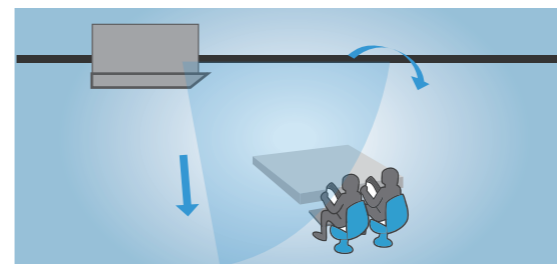
# 1-way Cassette Unit

The 1-way cassette unit, with ultra-thin and compact body, effectively saves installation space, meeting the air supply requirements of narrow rooms, walkways and other applications. It can be applied to households, hotels, small offices and other delicate and compact spaces.



## ● Ultra Wide Angle Air Supply

The left and right swing angles can be up to 75°, covering a wide range of air-conditioning spaces and providing a comfortable environment.

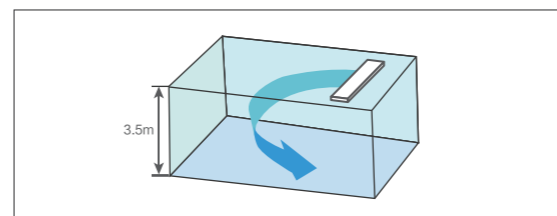


## ● Uniform Temperature Distribution and High Level of Comfort

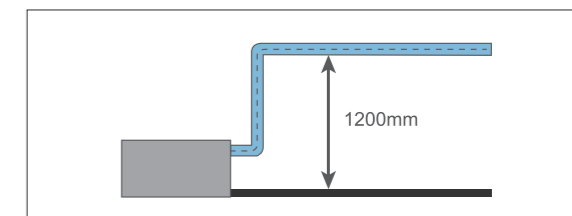
The temperature field is evenly and reasonably distributed, and the heating airflow directly reaches the ground, warming the entire room and greatly improving user comfort.



## ● High Ceiling Design, up to 3.5m Space

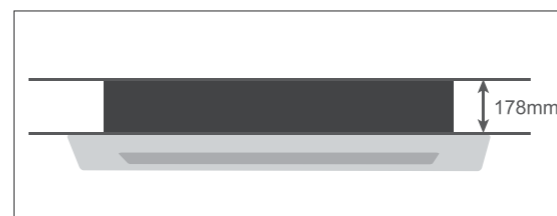


## ● Standard Fitting 1,200mm Condensate Water Lift Pump



## ● Ultra-slim Design

Thickness of the main body is only 178mm, which meets the requirements of delicate and compact space.



## ● Evaporator Auto-drying Operation

After the cooling mode is stopped, the fan will delay the shutdown time and run for a while to dry the condensate water on the surface of the evaporator to keep the inside of the unit dry, so as not to breed bacteria and mold.

## ● Anti-fouling Design

By adjusting the angle of the air deflector, it can avoid affecting the ceiling near the air outlet.



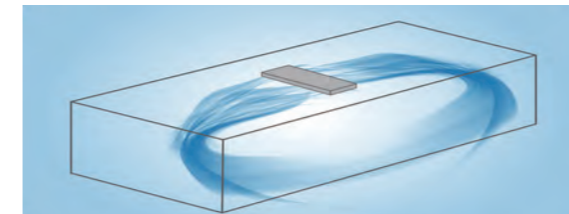
## 2-way Cassette Indoor Unit



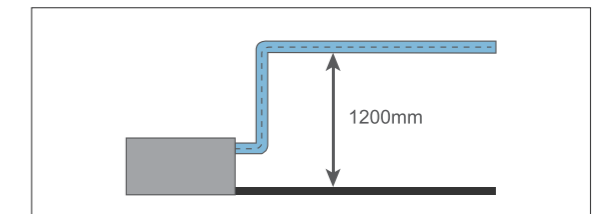
2-way cassette indoor unit adopts high-efficiency DC brushless motor and stylish appearance design, with middle air return and double-sided air supply mode for strong air volume, which can evenly supply air to all parts of the rooms. It can be widely used in hotels and official buildings, shopping malls, apartments, villas, households and other applications.

### ● Two-way Air Supply

The double-sided air outlet lengthens the air supply distance to solve the problem of difficult air supply in narrow and long rooms.



### ● Standard Fitting 1,200mm Condensate Water Lift Pump



### ● New Streamlined Appearance Design

The new generation of two-way cassette unit adopts a brand new front panel design, making it visually pleasing and perfectly fit into indoor decoration.

### ● Independent Swing Control

There are two air deflectors that can be controlled independently to adjust the air supply direction. They can make different combinations of air swing angles to avoid direct airflow to people.

\*It must be used with the wired controller (XE70-33/H).

### ● Automatic Louver Control

The front panel adopts an arc design for the end of air deflectors. With structural simulation analysis, the best air supply angle was simulated. In cooling mode, the unit can achieve horizontal air supply to avoid cold air draft to people. In heating mode, it can achieve vertical air supply to improve the degree of heating comfort.

### ● Quiet Fan Blade Design, Low Noise Operation

By adopting DC motor and large diameter centrifugal fan blade design, low revolving speed can achieve large air volume, uniform air supply, and lower noise, providing quiet and comfortable space.

### ● Compact Body Design

The new generation of two-way cassette unit has a very thin body(280mm), which is 11.1% thinner than the last generation. Therefore, it requires less installation space and is more practical in engineering.



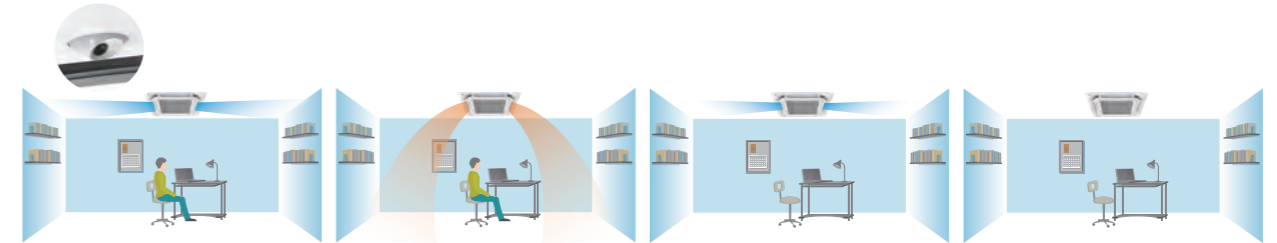
# 360 ° Air Discharge Cassette Indoor Unit



360 ° air discharge cassette, with 360 ° air discharge, which is suitable for different places such as hotels, office buildings, shopping malls, apartments, villas, and families. The all-round discharge cassette type indoor unit's air louver can be independently controlled to realize a new air flow form. The air supply range is wide and temperature distribution is more uniform, bringing a comfortable environment experience. With optional human sensory function, the control is more intelligent and user-friendly.

## ● 360 ° Overall Temperature Field Identification

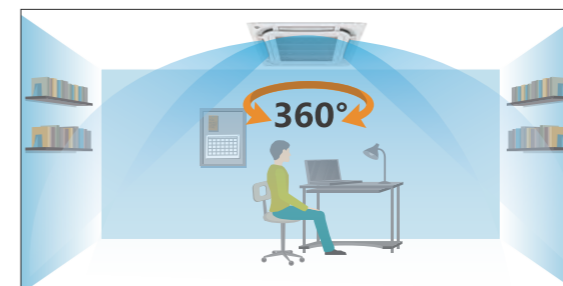
Intelligent sensory function control and high temperature field recognition accuracy can avoid cold wind blowing people, make warm wind follow people and prevent direct blowing to the human body; when it detects that no one is indoors, it automatically adjusts the set temperature; if there is no one indoors for long, the unit will be automatically shut off.



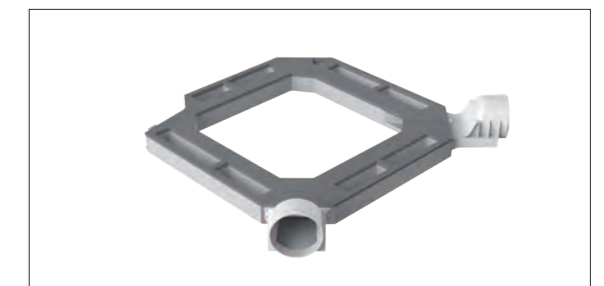
\*This function should be customized and needs to be used with wired controller XE70-33/H.

## ● 360 ° Surrounding Airflow

Wide air supply range, more uniform temperature distribution and more comfortable experience.

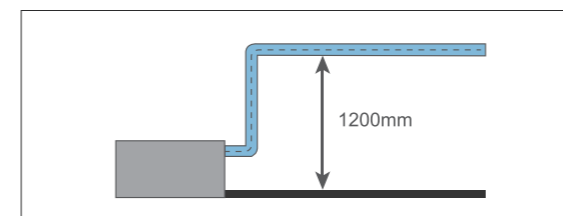


## ● Optional fresh air fitting can effectively introduce 8 ~ 10% of outdoor fresh air and improve indoor comfort.



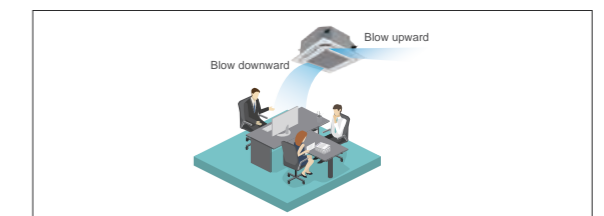
## ● DC Quiet Condensate Pump

The pump drainage lifting height can be up to 1,200mm, and vertical installation height of the unit can be flexibly adjusted, with high engineering adaptability.



## ● Independent Swing Control

The four air louvers can be controlled independently, and the air supply direction can be adjusted independently to achieve different angle combinations to avoid direct air blowing.



\* This function needs to be used with wired controller XE70-33/H.

## ● Optional lifting panel, and the inlet grille adopts two-way suspension lifting technology to realize the lifting function of the grille. User can clean the filter by himself thanks to convenient maintenance.



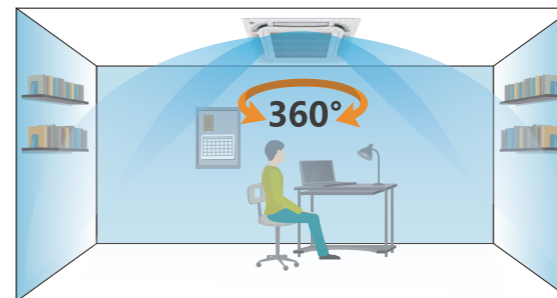
\*Optional fitting, please consult engineering and technical personnel.



# 360 ° Air Discharge Compact Cassette Indoor Unit

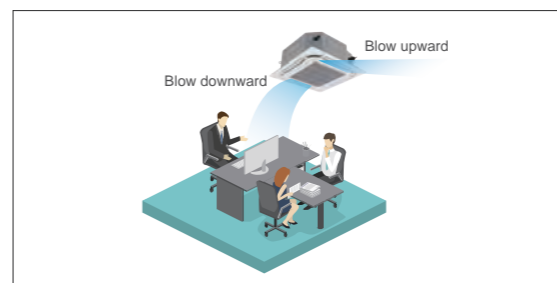


360 ° air discharge compact cassette, 8 models in the whole series, capacity range: 1.5kW ~ 5.6kW. Newly designed 360 ° air outlet panel can achieve 360 ° surrounding airflow, for wider air supply range, more uniform air distribution and temperature field, and more comfortable user experience. It can be widely used in households, hotels, restaurants, offices, meeting rooms and other places.



## ● 360 ° Surrounding Airflow

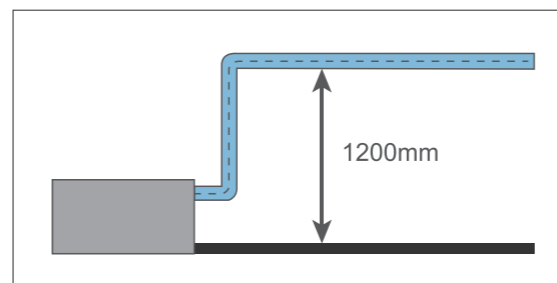
The newly designed 360 ° surrounding airflow has a wide air supply range, more uniform airflow organization and temperature distribution, avoiding partial hot and cold, and providing a more comfortable user experience.



## ● Independent Swing Control

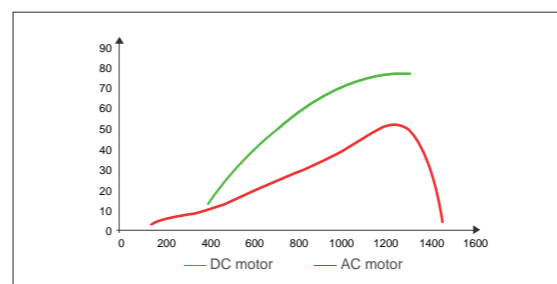
The four air louvers can be controlled independently, and direction of air supply can be regulated independently to achieve different angles of air supply and avoid direct wind blowing to people.

\* This function needs to be used with wired controller XE70-33/H.



## ● DC Quiet Condensate Pump

The high-lift DC quiet condensate pump is adopted, which has lower operating power and better sound quality. The maximum lifting height is 1,200mm, the installation design is more flexible, and it is convenient for the layout of engineering drain pipe.



## ● DC Motor Design

The fan adopts high-efficiency DC motor to realize stepless speed regulation. Compared with ordinary AC motor, it can achieve effective energy conservation of about 30%.

## ● Newly Designed Air Ducts and Blades for Lower Operating Noise

Internal air ducts and blades adopt new fluid simulation design, which allows lower operating noise under the same air volume. Noise is as low as 25dB(A).

## ● Compact Design

With compact structural design, unit body is smaller than the previous generation, and the installation area is smaller.

## ● Multiple Protection Functions

The unit is designed with multiple protection functions to achieve safe and reliable long-term operation, including water full protection, anti-freezing protection, fan error protection, etc.



# Wall-mounted Type Indoor Unit



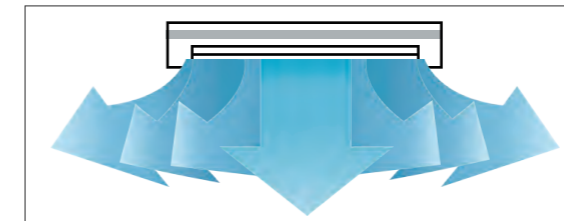
The whole series adopt high-efficiency DC motor, stylish design, simple and easy panel disassembly, convenient cleaning design, uniform air flow distribution, and wide air supply range. It can blow the wind to every corner of the room. It is widely used in various places such as houses, hotels, apartments, offices and meeting rooms.

## ● Easy Installation

It adopts wall-mounted installation, no need occupying floor space and no need to suspend the ceiling. Refrigerant pipe can be installed flexibly.

## ● Automatic Up and Down Swing Design

With up and down swing function, air louver can realize automatic control, air supply range is increased and air supply is uniform, creating a comfortable working and living environment.



## ● Wide Air Supply

The wind can be naturally and evenly distributed to all corners of the room.



## ● Quiet Design

Using high-efficiency cross-flow fan blades, noise of the whole unit is greatly reduced.

## ● Uniform Temperature Distribution and High Comfort

The temperature field is evenly and reasonably distributed, the heating airflow can directly reach the ground, warming the entire room, greatly improving human comfort.

## ● Washable Filter

With long-term filter, which can be disassembled and cleaned for easy maintenance.

## ● Removable Panel

Panel of the indoor unit can be easily slid in or out, disassembly is simple and easy, which is easy to clean and the appearance of indoor unit can be kept clean and new. Besides, there are many optional panels can be chosen.

## ● Powerful and Fast

Using intelligent temperature control technology, with powerful and rapid cooling/heating function, can make the indoor temperature quickly reach the set temperature.



## ● Multiple Protection Functions

Anti-freezing protection, fan motor built-in overload protection, temperature sensor error protection.

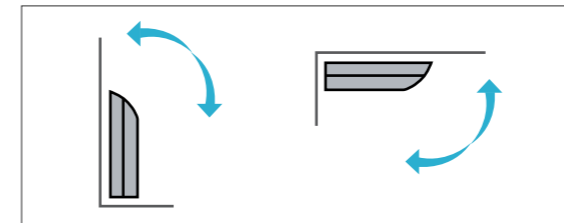




# Floor Ceiling Type Indoor Unit

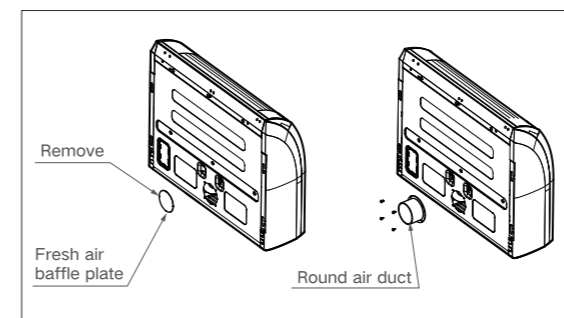


Floor ceiling type indoor unit has two installation methods: floor mounted and ceiling mounted. It is suitable to multiple applications such as hotels, office buildings, shopping malls, apartments, villas, households, etc.



## ● Flexible Installation

The unit can be floor mounted or ceiling mounted; the flexible and convenient installation method can give customers more installation choices. When floor mounted, the installation is more convenient.

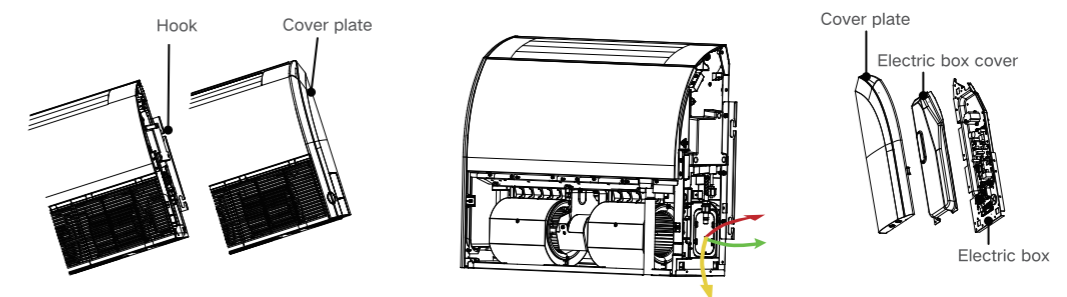


## ● Fresh Air Intake

Fresh air duct can be connected to introduce fresh air into the room from the outside.

## ● Easy Installation

Adjust the angle of the air deflector to avoid affecting the ceiling near the air outlet.



1) Concealed hook design, beautiful appearance;

2) Multi-directional outlet method can adapt to different installation sites;

3) The concealed design of the side electrical box, Wire can be connected by disassembling the cover.

## ● Quiet Design

The new low-noise fan blade cooperates with the DC motor and excellent soundproof air distribution structure to ensure that the air supply is even and smooth, creating a quiet and comfortable environment.



# Console Indoor Unit



Console indoor unit features easy installation without suspended ceiling, which will not affect the integrated indoor decoration. It can be widely applied in villas, offices, meeting rooms, etc., providing users with a comfortable living and working environment.

- **Quiet Fan Blade Design, Low Noise Operation**

By adopting DC motor and large diameter centrifugal fan blade design, low speed can achieve large air volume, uniform air distribution and low noise, providing quiet and comfortable space.

- **Uniform Temperature Distribution and High Level of Comfort**

The temperature field is evenly and reasonably distributed, and the heating airflow directly reaches the ground, warming the entire room to greatly improve user comfort.

- **Removable Panel**

Panel of the indoor unit can be easily slid in or out for easy disassembly and convenient cleaning; the appearance of indoor unit can be kept clean and new.

- **Multiple Protection Functions**

Anti-freezing protection, fan motor built-in overload protection and temperature sensor error protection.

- **Strong and Fast**

By adopting intelligent temperature control technology, with powerful and rapid cooling/heating function, it can make indoor temperature quickly reach the set temperature.

- **Washable Filter**

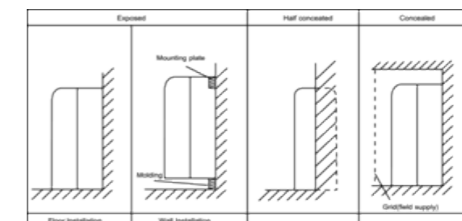
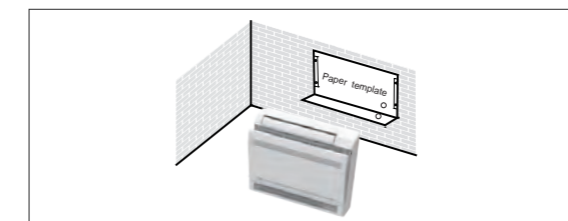
The long-life filter can be disassembled and cleaned, for easier maintenance.

- **Two-way Air Supply**

With the upper and lower air outlets, the unit can realize 3D air supply, which means the air will flow naturally and evenly to every corner of the room.

- **Easy Installation**

It can be installed on the floor without the need to cooperate with ceiling, and arrangement of refrigerant pipe is flexible and free.



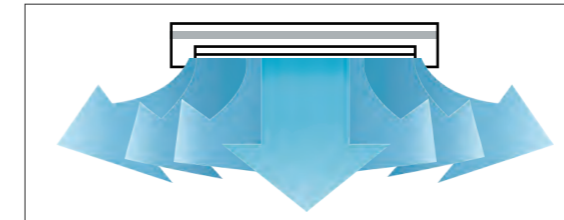


# Floor Standing Type

With large cooling capacity and a space-saving vertical structure, it is widely applied in houses, hotels, restaurants, chain stores, offices, and meeting rooms to provide users with a comfortable and pleasant living and working environment.



## ● Up and Down Swing, Long Air Supply Distance



## ● Washable Filter

The long-term filter can be disassembled and cleaned, for easier maintenance.

## ● Quiet Design

By adopting high-efficiency centrifugal fan blades and quiet valves, noise of the complete unit is greatly reduced.

\* Work with remote control YAP1F

## ● Strong and Fast

By adopting intelligent temperature control technology, with powerful and rapid cooling/heating function, it can make indoor temperature quickly reach the set temperature.

## ● I Feel Function

After the user turns on this function, the unit can detect the temperature of user's location in real time and adjust to improve user comfort.

\* Work with remote control YAP1F

## ● Multiple Protection Functions

Anti-freezing protection, fan motor built-in overload protection and temperature sensor error protection.



## Concealed Floor Standing Type

This unit adopts floor standing concealed installation method. With small occupation space, it will not impact the integrated indoor decoration. Cooling capacity ranges from 2.2kW to 7.1kW. It can be widely used in hotels, schools, villas, offices and meeting rooms, providing users with a comfortable living and working environment.

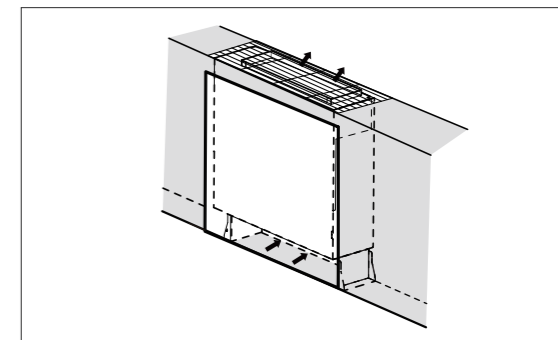


### ● DC Motor Design, Low Noise Operation

The brushless DC motor realizes stepless speed adjustment, and can set the automatic quiet mode through wired controller to make the operation quieter.

### ● Ultra-thin Body Design, Saving Installation Space

The structure is compact, thickness of the unit body is only 200mm, and the installation space and decoration space are greatly saved when adopting seated installation.



### ● High Static Pressure Design, Multi-stage Static Pressure for Adjustment

On the basis of the limited vertical return air space structure, the 5-stage external static pressure can be adjusted, and the maximum static pressure can reach 60Pa. It meets the engineering design and application of air duct installation requirements, which is more convenient and fast.

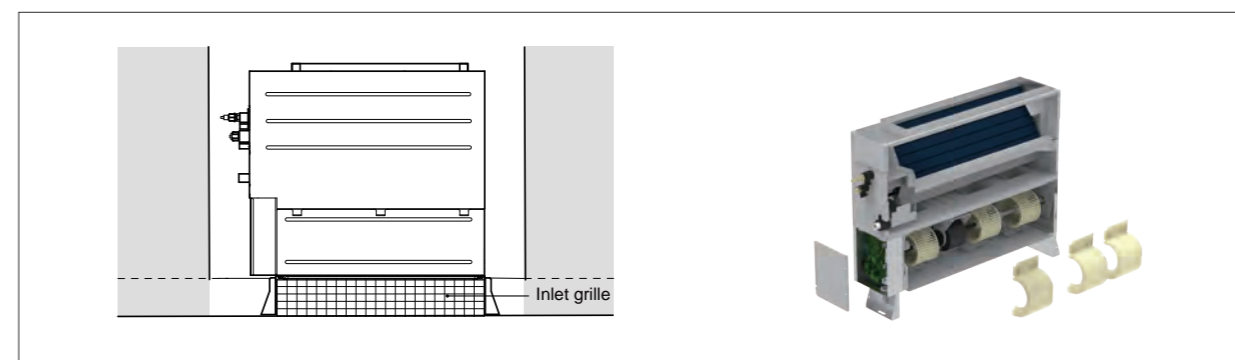
### ● Flexible installation

The front detachable air return structure can realize the flexible switch between side air return and the bottom air return. Different height support foot designs to meet the user's choice of different air volume and different decoration space.



### ● Convenient Maintenance Design

Convenient front-side disassembly maintenance design; only maintenance port in the decorative wall is reserved, so that all the internal parts can be disassembled from the front side.



### ● Safe and Reliable Operation

The unit adopts multiple internal wiring, water-return elbows and anti-overflow structure, which has perfectly solved the hidden danger of water penetration of electric box due to ultra-thin design.



# AHU-KIT

[Constitution]: Electronic expansion valve components, control components.

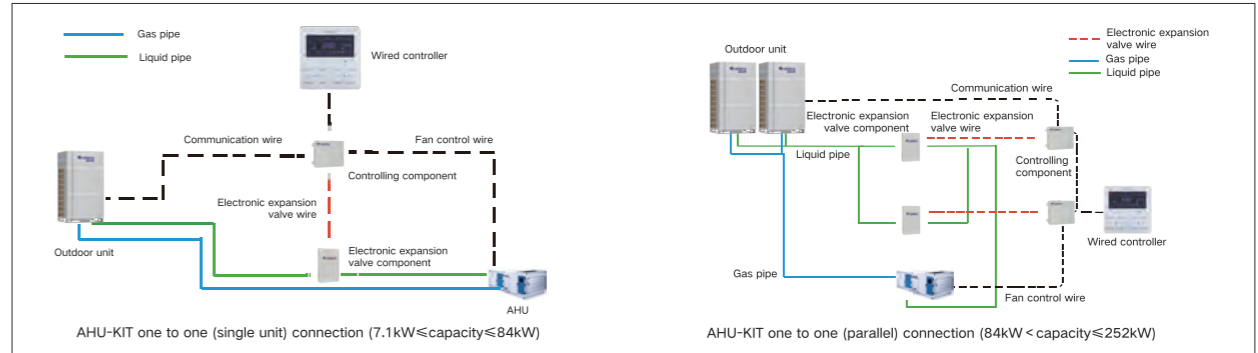
[Function]: Connect the direct-expansion air handling unit (Gree's or third-party's direct-expansion air handling unit ) to the Gree multi VRF system, so that the air handling unit has the functional advantages of multi VRF unit.

## ● Connection

The AHU-KIT with the air handling unit can be used as a multi VRF indoor unit to connect to a multi VRF outdoor unit. The connection is limited by the outdoor unit. There are the following three types of connections:

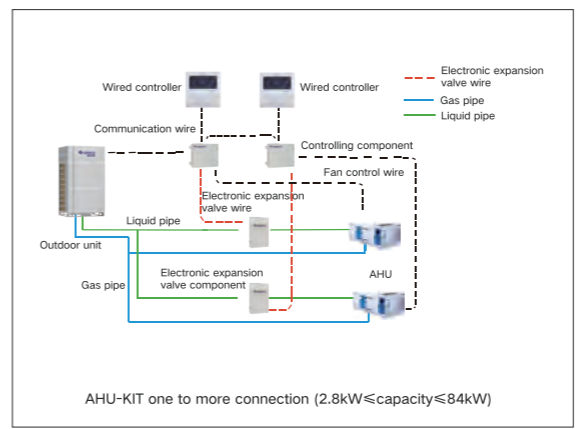
### One to One

The AHU-KIT with the air handling unit can be connected with multi VRF outdoor units in one-to-one way. Total capacity of the AHU-KIT should be between 50% and 110% of the outdoor unit's capacity.



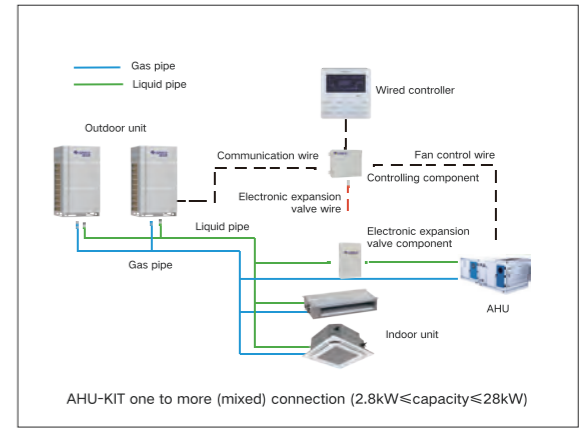
### One to Many (Only DX AHU Unit)

Multiple sets of AHU-KIT-air handling units can be connected to one multi VRF outdoor unit. Total capacity of the AHU-KIT should be between 50% and 110% of the outdoor unit's capacity. (Take one for two as an example)



### One to Many (DX AHU Unit + GMV Indoor Unit)

The AHU-KIT and ordinary multi VRF indoor unit can be connected into the same multi VRF outdoor unit. Total capacity of the AHU-KIT and the ordinary multi VRF indoor unit is between 50% and 110% of the outdoor unit's capacity, and total capacity of the AHU-KIT cannot exceed 30% of the outdoor unit's capacity.



\*2.8~28kW units can be connected in the same system;  
22.4~84kw units can be connected in the same system.

## ● Features:

- The two components are designed independently, and the installation is convenient. The control component is installed indoors and electronic expansion valve can be installed indoors or outdoors, with flexible engineering design.
- A variety of model combinations can expand the capacity range to meet the requirements in most occasions. With fault signal to ensure safe and reliable operation.
- The outdoor unit is used as cooling and heating sources, no additional cooling and heating sources are required.
- Access to variable refrigerant control system, using DC inverter control technology.
- Can connect to the third party's controller to set on/off, modes, temperature and related parameters of the units.



# Fresh Air Processing Indoor Unit



- Air volume: 1,000-4,000m<sup>3</sup>/h
- DC inverter technology: adjust the capacity output according to actual needs to ensure stable humidity and reduce power consumption.
- Direct evaporative cooling: treat outdoor air to the state which is required indoors to achieve the dual effect of air conditioning and fresh air.
- Air conditioner and fresh air linkage: achieve simultaneous air conditioning and fresh air treatment in the same system. When the VRF unit is turned on, the fresh air unit is linked at the same time, worry-free and energy-saving.

